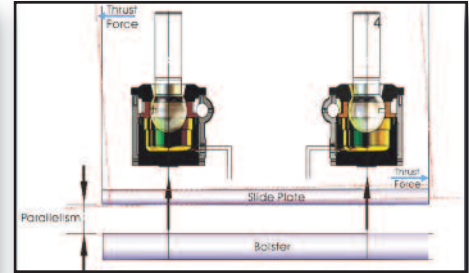
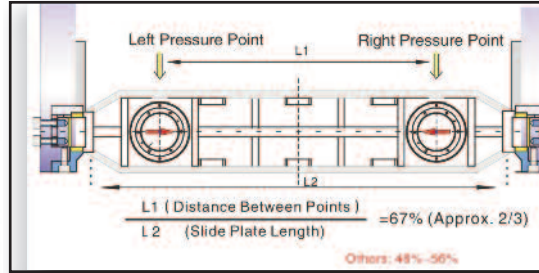


MMC PRESSES 110 THRU 315 TON CX2 PRESSES



MMC Presses Quality Feature:

All CX2 series presses feature widely spaced connections (spaced at 2/3 of total slide width) and a responsive hydraulic overload which monitors and trips both valves simultaneously in the event of an overload, helping reduce the chance of press and tooling damage.

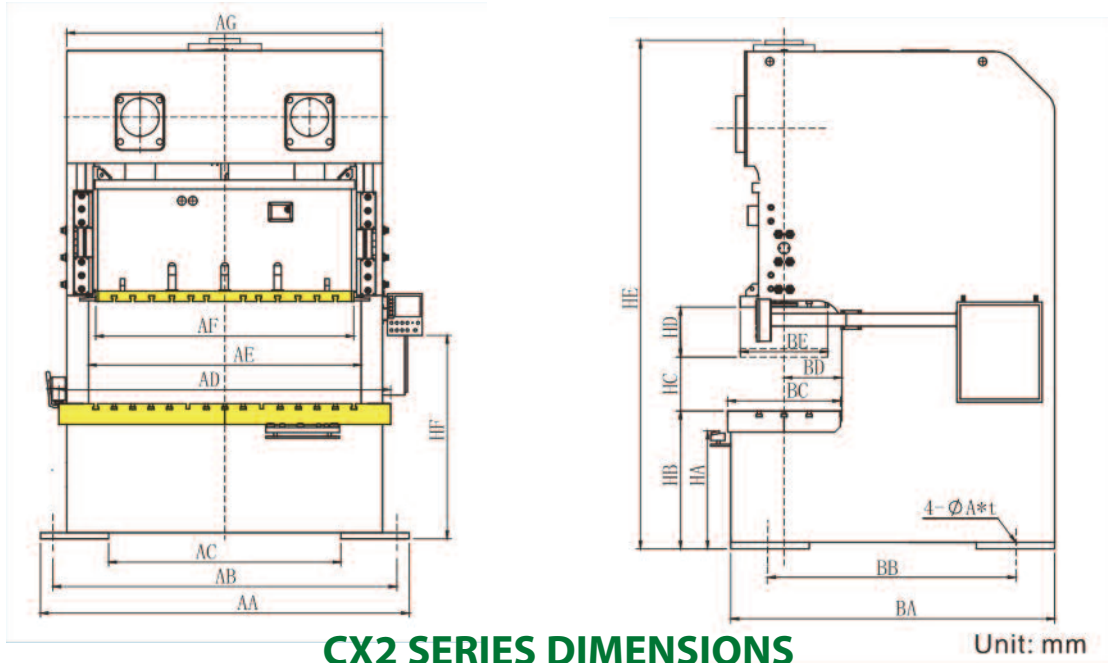
CX2 SERIES BASIC SPECIFICATIONS

All specifications are subject to change without notice. If you have critical dimensions that must be maintained, please confirm before ordering.

No.	Feature	Unit	CX2-1100		CX2-1600		CX2-2000		CX2-2500		CX2-3150	
			Metric Ton	110	160	200	250	315	US Ton	121	176	220
2	Model Designation	Type L or H	L	H	L	H	L	H	L	H	L	H
3	Tonnage Rating Above BDC	mm	5.0	3.0	6.0	3.0	6.0	3.0	7.0	3.5	7.0	3.5
		inch	0.20	0.12	0.24	0.12	0.24	0.12	0.28	0.14	0.28	0.14
4	Stroke Length	mm	180	110	200	130	250	150	280	170	280	170
		inch	7.09	4.33	7.87	5.12	9.84	5.91	11.02	6.69	11.02	6.69
5	Speed Range	SPM	35-65	50-100	30-55	40-85	25-45	35-70	20-35	30-60	20-35	30-50
6	Die height over bolster SDAU	mm	400		450		500		550		550	
		inch	15.75		17.72		19.69		21.65		21.65	
7	Slide Adjustment	mm	100		100		120		120		120	
		inch	3.94		3.94		4.72		4.72		4.72	
8	Max. Upper Die Weight	Kg	800		1270		1470		1560		1560	
		lb	1760		2794		3234		3432		3432	
9	Bolster Area (R-L x F-B)	mm	1800	650	2000	760	2400	840	2700	900	2700	920
		inch	70.87	25.59	78.74	29.92	94.49	33.07	106.30	35.43	106.30	36.22
10	Bolster Thickness	mm	130		150		170		170		180	
		inch	5.12		5.91		6.69		6.69		7.09	
11	Slide Area (R-L x F-B)	mm	1400	500	1600	550	1850	650	2100	700	2100	700
		inch	55.12	19.69	62.99	21.65	72.83	25.59	82.68	27.56	82.68	27.56
12	Throat Depth	mm	335		390		430		460		460	
		inch	13.19		15.35		16.93		18.11		18.11	
13	Die Shank Hole Diameter & Spacing (Qty. 3)	mm	50	280	50	325	50	375	50	430	50	450
		inch	1.97	11.02	1.97	12.80	1.97	14.76	1.97	16.93	1.97	17.72
14	Main Motor (VFD)	Kw	11		11		15		19		22	
		hp	15		15		20		25		29	
15	Slide Adjust Motor	Kw	0.8		1.1		1.5		1.5		2.0	
		hp	1.0		1.5		2.0		2.0		2.7	
16	Compressed Air Requirement	Mpa	0.55		0.55		0.55		0.55		0.55	
		psi	80		80		80		80		80	
17	Accuracy Standard	JIS	Class 1		Class 1		Class 1		Class 1		Class 1	
18	Approx. Press Weight	Kg	13,500		19,500		28,000		35,000		42,000	
		lb	29,700		42,900		61,600		77,000		92,400	
19	OPTIONAL Die Cushions		1 Pad / 2 Cylinders									
20	Capacity	kN	36	n/a	63	n/a	100	n/a	140	n/a	140	n/a
		US Ton	4.0	n/a	6.9	n/a	11.0	n/a	15.4	n/a	15.4	n/a
21	Compressed Air Requirement	Mpa	0.6	n/a	0.6	n/a	0.6	n/a	0.6	n/a	0.6	n/a
		psi	87	n/a	87	n/a	87	n/a	87	n/a	87	n/a
22	Stroke Length	mm	70	n/a	70	n/a	80	n/a	100	n/a	100	n/a
		inch	2.76	n/a	2.76	n/a	3.15	n/a	3.94	n/a	3.94	n/a
23	Pad Area (L-R x F-B)	mm	1058	346	1268	470	1470	546	1680	654	1680	654
		inch	41.65	13.62	49.92	18.50	57.87	21.50	66.14	25.75	66.14	25.75
19	OPTIONAL Die Cushions		2 Pads / 2 Cylinders									
20	Capacity (Each Cylinder)	kN	36	n/a	63	n/a	100	n/a	140	n/a	140	n/a
		US Ton	4.0	n/a	6.9	n/a	11.0	n/a	15.4	n/a	15.4	n/a
21	Compressed Air Requirement	Mpa	0.6	n/a	0.6	n/a	0.6	n/a	0.6	n/a	0.6	n/a
		psi	87	n/a	87	n/a	87	n/a	87	n/a	87	n/a
22	Stroke Length	mm	70	n/a	70	n/a	80	n/a	100	n/a	100	n/a
		inch	2.76	n/a	2.76	n/a	3.15	n/a	3.94	n/a	3.94	n/a
23	Pad Area (L-R x F-B) x 2	mm	410	330	500	460	540	460	700	510	700	510
		inch	16.14	12.99	19.69	18.11	21.26	18.11	27.56	20.08	27.56	20.08

005

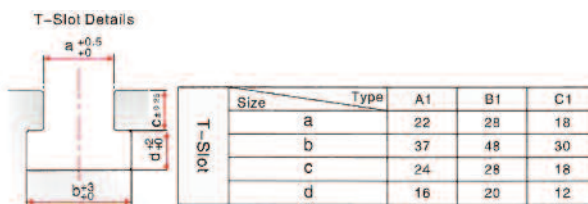
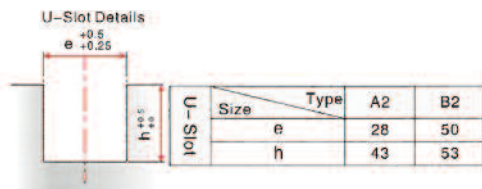
MMC PRESSES REFERENCE DIMENSIONS CX2 SERIES



CX2 SERIES DIMENSIONS

All specifications are subject to change without notice. If you have critical dimensions that must be maintained, please confirm before ordering.

Model	CX2-1100		CX2-1600		CX2-2000		CX2-2500		CX2-3150	
	L	H	L	H	L	H	L	H	L	H
AA	1900		2200		2550		3000		3000	
AB	1800		2080		2400		2700		2700	
AD	1800		2000		2400		2700		2700	
AE	1440		1660		1920		2220		2220	
AF	1400		1600		1850		2100		2100	
AG	1700		1970		2275		2585		2585	
BA	1745		1970		2275		2585		2585	
BB	1365		1580		1885		2195		2195	
BC	650		760		840		900		920	
BD	335		390		430		460		460	
BE	500		550		650		700		700	
HA	630		680		770		870		870	
HB	830	860	905	1025	1000	860	1100	860	1100	860
HC	400		450		500		550		550	
HD	830	860	905	1025	1000	860	1100	860	1100	860
HE	2765		3185		3660		4070		4070	
HF	1400		1570		1670		1670		1670	
ØA*T (Plate Thickness)	Ø35 x 40		Ø41 x 45		Ø41 x 45		Ø47 x 50		Ø47 x 50	

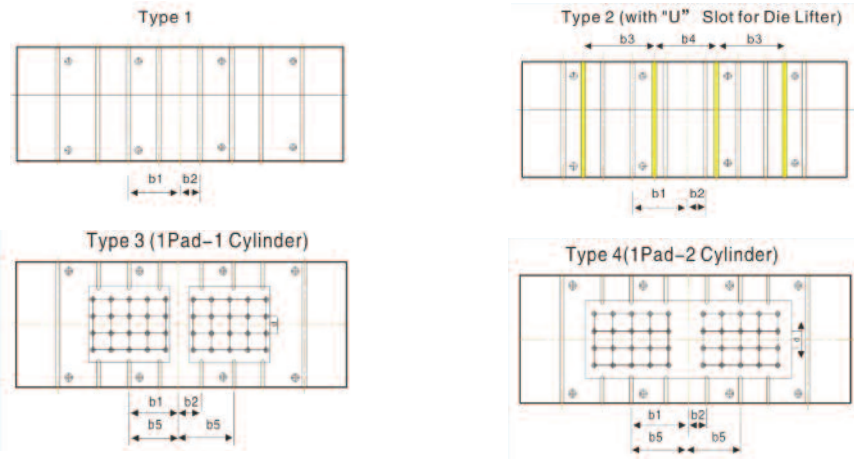


NOTE:

All specifications are subject to change without notice. If you have critical dimensions that must be maintained, please confirm before ordering. Special slide and bolster machining is available. For cost and lead time, please contact Minster.

010

CX2 SLIDE & BOLSTER REFERENCE DIMENSIONS



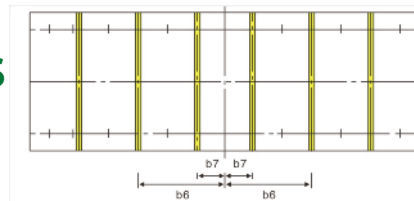
CX2 SERIES BASIC SPECIFICATIONS

All specifications are subject to change without notice. If you have critical dimensions that must be maintained, please confirm before ordering. Special slide and bolster machining is available. For cost and lead time, please contact Minster.

Model		Units	CX2-1100	CX2-1600	CX2-2000	CX2-2500	CX2-3150
Die Cushion Pad Area	1 Pad-1 Cylinder	mm	360x346	480x470	560x546	660 x 654	660 x 654
		inch	14.17 x 13.62	18.90 x 18.50	22.05 x 21.50	25.98 x 25.75	25.98 x 25.75
	1 Pad-2 Cylinder	mm	1058 x 346	1268 x 470	1470 x 546	1680 x 654	1680 x 654
		inch	41.65 x 13.62	49.92 x 18.50	57.87 x 21.50	66.14 x 25.75	66.14 x 25.75
T-Slot Type			A1	A1	B1	B1	B1
Number of T-Slot			6	8	8	8	8
b1	mm	375	375	375	450	450	
	inch	14.76	14.76	14.76			
b2	mm	125	125	125	150	150	
	inch	4.92	4.92	4.92	5.91	5.91	
b3	mm	320	520	710	680	680	
	inch	12.60	20.47	27.95	26.77	26.77	
b4	mm	430	520	520	540	540	
	inch	16.93	20.47	20.47	21.26	21.26	
b5	mm	255	415	455	510	510	
	inch	10.04	16.34	17.91	20.08	20.08	
Type 3 & 4	Shank Hole Qty x Dia.		30 x Φ 20	48 x Φ 20	48 x Φ 28	70 x Φ 28	70 x Φ 28
	Shank Hole Distance (c x d)	mm	75 x 100	75 x 75	100 x 100	100 x 100	100 x 100
		inch	2.95 x 3.94	2.95 x 2.95	3.94 x 3.94	3.94 x 3.94	3.94 x 3.94

Model	Units	CX2-1100	CX2-1600	CX2-2000	CX2-2500	CX2-3150
Slide Area (LRxFR)	mm	1400 x 500	1600 x 550	1850 x 650	2100 x 700	2100 x 700
	inch	55.12 x 19.69	62.99 x 21.65	72.83 x 25.59	82.68 x 27.56	82.68 x 27.56
T-Slot Type		A1	A1	B1	B1	B1
T-Slot Qty		4	6	6	6	6
b6	mm	375	375	375	450	450
	inch	14.76	14.76	14.76	17.72	17.72
b7	mm	125	125	125	150	150
	inch	4.92	4.92	4.92	5.91	5.91

SLIDE PLATE T-SLOTTING DETAILS



011